

BUILD WITH
CONFIDENCE



ABOUT COMPANY

At Sony Blue Metals, established in 2010, has positioned itself as a reliable supplier of premium construction materials. Our product range encompasses essential foundation materials and advanced ready-mix concrete solutions, catering to diverse construction requirements. Our mission revolves around the delivery of consistently excellent products, ensuring the requisite durability and strength for all construction endeavours. Through a steadfast commitment to innovation and customer satisfaction, Sony Blue Metals has emerged as a dependable ally for builders and contractors.



READY MIX CONCRETE

Our RMC is available in multiple grades to suit various structural needs

- **M10, M15:**
Ideal for minimal and non-structural applications.
- **M20, M25:**
Commonly used for residential and commercial projects.
- **M30, M35:**
Perfect for heavy-duty and industrial applications.
- **M40:**
Suitable for high-strength and specialized projects.



Available with
Boom Pump



OUR COMMITMENT TO QUALITY

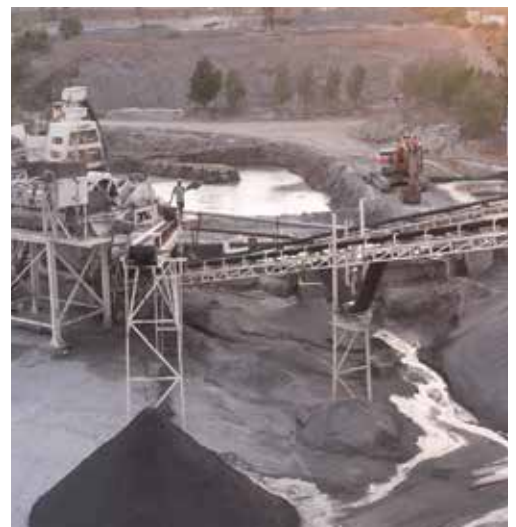
At Sony Blue Metals, quality is our top priority. We adhere to stringent quality control measures, ensuring that each batch of concrete and load of aggregate meets industry standards. Our in-house laboratory conducts comprehensive tests to guarantee the strength and reliability of our products. We emphasize sustainable practices, using only rainwater or LNT water for processing, thus contributing to environmental conservation. Our commitment to both quality and sustainability sets us apart in the industry.

AGGREGATES AND SAND



We offer a diverse range of aggregates tailored to meet specific construction requirements

- **Rough Stone:**
Essential for foundational and structural support.
- **40mm, 30mm, 20mm, 12mm, 6mm Aggregates:**
Different sizes for various construction phases.
- **Dust:**
Suitable for filling, levelling, and paving.
- **M Sand and P Sand** (VSI Double Washed Sands):
High-quality sands for superior construction finishes.
- **Concrete Sand:**
Specifically graded for optimal use in concrete mixtures, providing strength and durability.



GOVERNMENT APPROVED PRODUCT



**COMMITMENT
TO QUALITY**



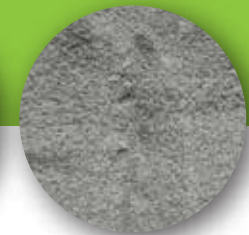
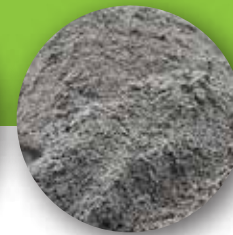
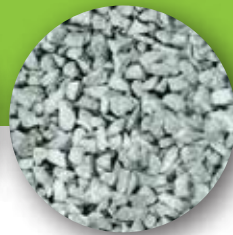
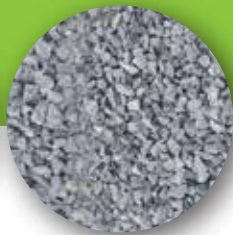
**QUALITY
ASSURANCE**



**SUSTAINABILITY
SOLUTIONS**



**CUSTOMER
SATISFACTION**



SONY BLUE METALS

857/3 Muthalipalayam, Uthiyur, Kangayam,
Tiruppur, Tamilnadu- 638 703.

+91 95855 94225 | +91 95855 94231
+91 95855 94232 | +91 90035 66766

✉ sonybluemetals@gmail.com 🌐 sonyinfra.in

SONY READY MIX CONCRETE

869 Muthalipalayam, Uthiyur,
Kangayam, Tiruppur, Tamilnadu- 638 703.

+91 70929 21188 | +91 95855 94239